

**TORRES**  
**EVX**  
BEYOND EXPECTATION







THE BEST OF BOTH WORLDS –  
EV AND OFF-ROAD SUV





## THE STYLISH TORRES EVX – TURNS HEADS

'Powered by Toughness' – KGM's design vision and philosophy for its cars. With its confident character lines and strong detailing such as the horizontal LED daytime running lights, The Torres EVX exudes a hip and distinctive look.



- 1. DOT-SHAPE LED DAYTIME RUNNING LIGHTS
- 2. LED HEADLIGHTS
- 3. FRONT BUMPER WITH NEW AERO SHUTTER





## THE DISTINCTIVE DESIGN – YOU’LL TAKE A SECOND LOOK

With strong design details such as the hexagonal trim resembling the boot-mounted spare wheel cover of a traditional SUV, the design of the car’s rear view perfectly complements the front.

1. COMBINATION LED REAR LIGHTS
2. BODY-COLOURED HEXAGONAL REAR TRIM & TAILGATE HANDLE
3. REAR BUMPER







## PUTTING ON THE STYLE IN PROFILE

Straight, bold and flowing character lines create a strong, dynamic look to drive the brand's heritage forward.



- 1. EV CHARGING PORT
- 2. 20" DIAMOND-CUT ALLOY WHEELS
- 3. FLAG STYLE EXTERIOR DOOR MIRRORS





## INTERIOR DESIGN AT ITS FINEST

The future-proof slim and wide interior design enhances driver visibility and convenience

1. MOOD LIGHTING 2. 'SHIFT BY WIRE' TOGGLE SWITCH



CHARCOAL BLACK INTERIOR COLOUR





# MAKING THINGS EASIER, SAFER AND MORE CONVENIENT

The Torres EVX features a comprehensive suite of digital features to make driving safer and travelling more relaxed. Parking is made safe and easy with the 3D 360° ‘surround view’ monitoring system, while the driver can talk more comfortably with rear seat passengers thanks to an ‘aided conversation’ mode. Those in the back can also take a rest during a long journey by using the ‘sleeper mode’ to prevent music emitting from the speakers



- 1. REAR SEAT ‘SLEEPER MODE’
- 2. ENHANCED CONVERSATION WITH REAR PASSENGERS
- 3. 3D 360° AROUND VIEW MONITORING SYSTEM



# TECHNOLOGY TO PUT YOU IN CONTROL

To minimise the number of physical buttons and controls and simplify driving, The Torres EVX features an ergonomically designed dashboard with a futuristic, 12.3-inch digital interface.

12.3" DIGITAL INSTRUMENT CLUSTER



TOUCH SCREEN DISPLAY



1. SMART AUDIO SYSTEM 2. APPLE CARPLAY & ANDROID AUTO

DUAL-ZONE AUTOMATIC AIR CONDITIONING CONDITIONING (CABIN COMFORT) MODE



TEAL GREY & GREIGE WHITE 2-TONE INTERIOR COLOUR





# ARE YOU SITTING COMFORTABLY?

With optimised seat designs and added convenience features, the Torres EVX offers an extremely comfortable and relaxed interior.

1. 8-WAY ADJUSTABLE POWERED SEATS WITH 2-WAY LUMBAR SUPPORT AT THE FRONT 2. HEATED SEATS, FRONT AND REAR 3. VENTILATED FRONT SEATS  
4. FRONT HEADREST HANGERS 5. FRONT SEAT BACK POCKETS WITH MOBILE PHONE HOLDER





# FULLY LOADED AND READY TO GO

With a load capacity of up to 1,662litres your needs for whatever your leisure pursuits are fully met.



## CHOICE OF SEATING CONFIGURATIONS Load space in litres

- 1. 2nd row 100% FOLDED (1,662litres)
- 2. 2nd row 60% FOLDED (1,320litres)
- 3. 2nd row 40% FOLDED (1,181litres)
- 4. NORMAL SEATING (839litres)
  - including hidden underfloor space

\* VDA213 / 214 measurement







## OPEN WIDE AND SAY “AH”!

The fully flexible load area offers complete practicality and is so large and comfortable you could even camp in it!

SMART POWER-OPERATED TAILGATE



INTERNAL TAILGATE OPENING BUTTON

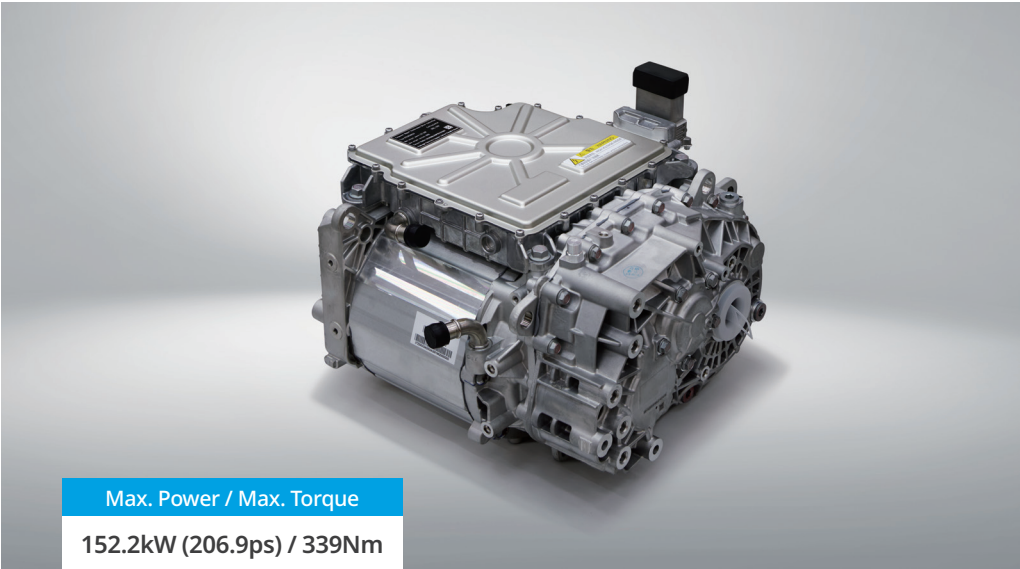




# ELECTRIC POWER WITH PERFORMANCE TO MATCH

The Torres EVX utilises a lithium iron phosphate battery for safety, durability and to avoid the risk of fire as well as protection from external impact. New technology on this next generation battery known as ‘cell to pack’ mounts the rectangular shaped blade cells directly into the battery to give higher energy efficiency and enhance safety. This helps to achieve a driving range of 462km (WLTP), more than sufficient for daily commuting as well as long distance trips on a single charge.

## 3-IN-1 EV DRIVE SYSTEM



Max. Power / Max. Torque
152.2kW (206.9ps) / 339Nm

The Torres EVX is equipped with a high-output 3-in-1 EV drivetrain, a 339Nm torque and 152.2 kW power motor to give efficient and stable driving.

## BLADE BATTERY



Battery capacity
73.4 kWh

New technology on this next generation battery known as ‘cell to pack’ mounts the rectangular shaped blade cells directly into the battery pack to give higher energy efficiency and enhanced safety.

MAXIMUM DRIVING DISTANCE FROM ONE CHARGE	Combined	TOWING CAPABILITY	with braked trailer	with unbraked trailer
	462km		1,500kg	500kg

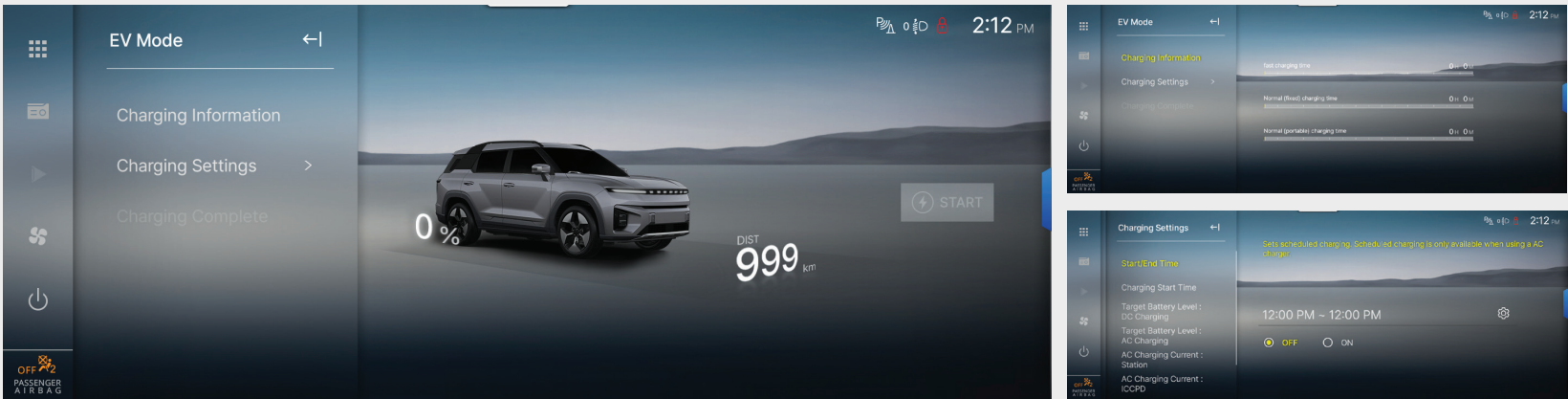




# ON CHARGE – WITH OPTIONS TO SUIT YOU

The Torres EVX offers you a faster and more convenient charging system to suit your pre-set charging parameters.

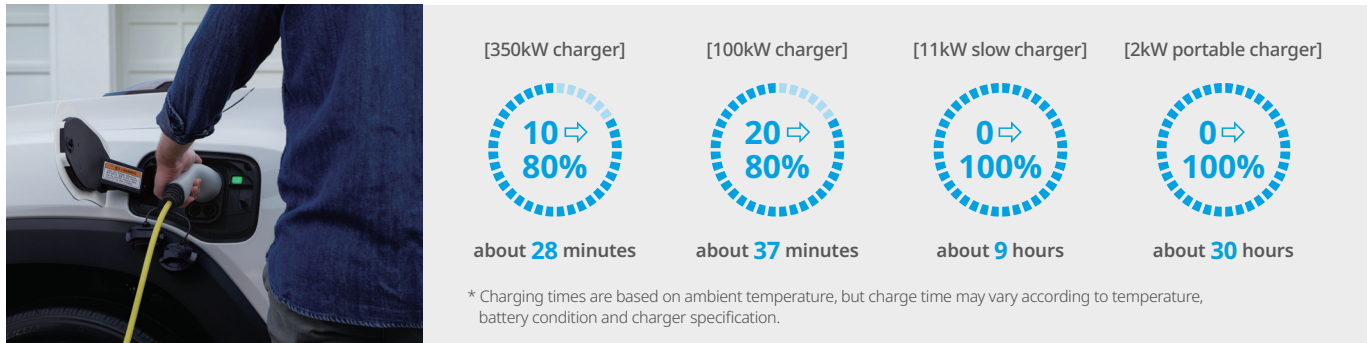
## EV MODE DISPLAY



**Charging information**  
All the charging information is displayed on the screen to show charging time, type (fast or slow) and range.

**Charging management**  
The easy-to-use AVN menu lets you choose the charging start and end times as well as the days of the week to take advantage of discounted electric utility rates.

## CHARGING TIME BY CHARGER



## IN-CABLE CONTROL AND PROTECTION DEVICE





# THE POWER TO DELIVER OFF-GRID

Helpfully, the Torres EVX features a vehicle-to-load (V2L) connector which means you can power-up outdoor domestic appliances straight from the car's battery when you are off-grid and want to enjoy your leisure activities in the wild to the full.



## ESTIMATED ELECTRICITY USAGE TIME FOR EXAMPLE DEVICES POWERED VIA THE V2L

 <b>Microwave (1.1kW)</b> approx 40 hours	 <b>Hair dryer (1.6kW)</b> approx 27 hours	 <b>Electric heater (0.6kW)</b> approx 73 hours
 <b>Coffee pot (1.2kW)</b> approx 37 hours	 <b>Air fryer (1.5kW)</b> approx 29 hours	 <b>Beam projector (0.05kW)</b> approx 880 hours

\* V2L can be used while the remaining battery power is within the range of 80% down to 20%  
- Electronic devices up to a maximum of 3.5kW can be used.  
- Electronic devices can be used down to 20% of battery power remaining  
- V2L function stops automatically when the pre-set level of battery discharge has been reached  
(The value can be set between 20% ~ 70%)

## V2L CONNECTOR





# ACTIVELY KEEPING YOU SAFE

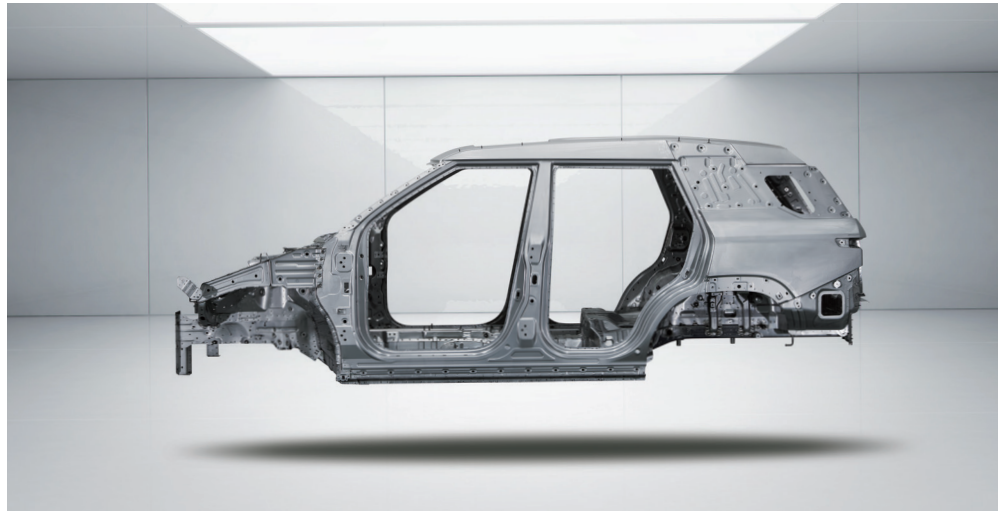
Active safety equipment includes a best-in-class eight airbags as well as 81% utilisation of high-tensile steel within the chassis construction to achieve the highest level of structural safety amongst its competitors.

## 8 AIRBAGS



- 1. Driver's airbag
- 2. Driver's knee airbag
- 3. Passenger's airbag
- 4&5. Driver's & passenger's side airbags
- 6&7. Curtain airbags
- 8. Seat centre airbag

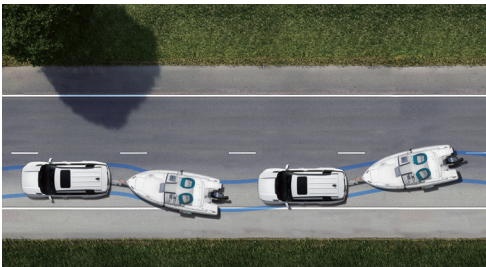
## 81% HIGH-TENSILE STEEL



## MULTI COLLISION BRAKE



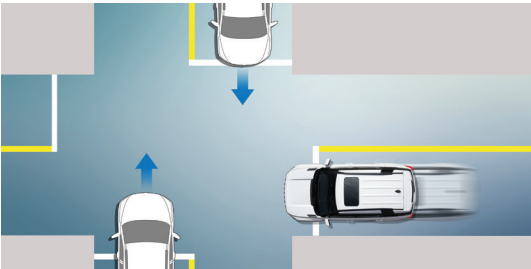
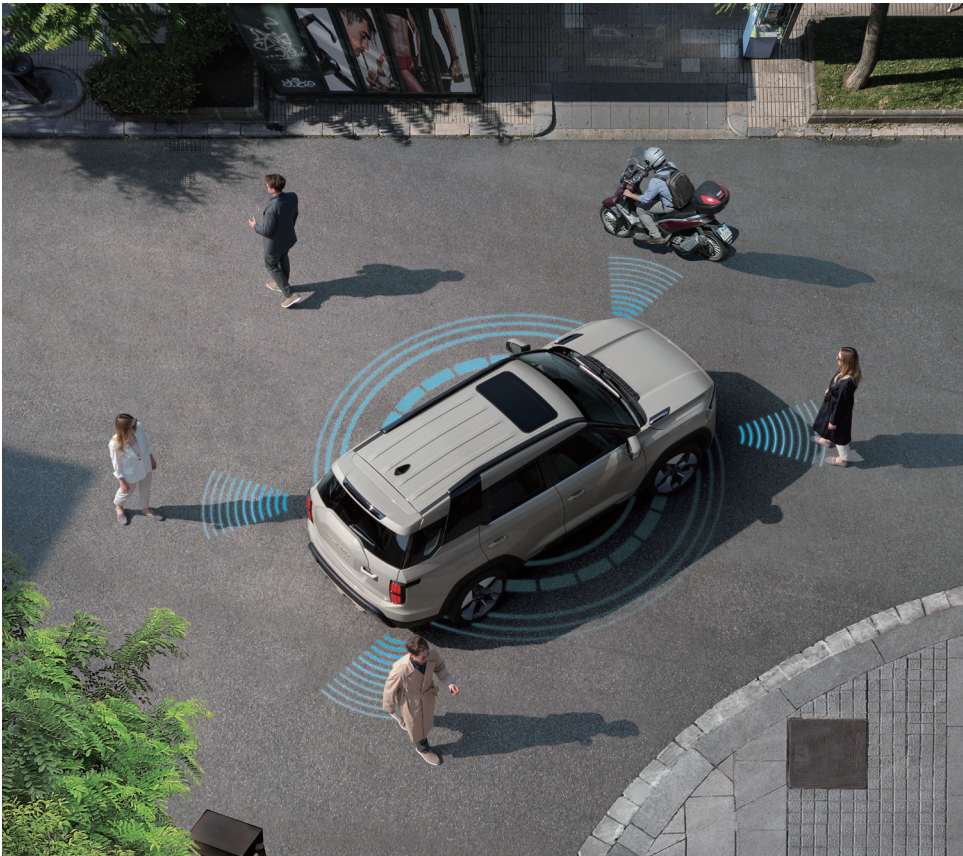
## TRAILER STABILITY ASSIST



# KEEPING YOU SAFE FROM EVERY ANGLE

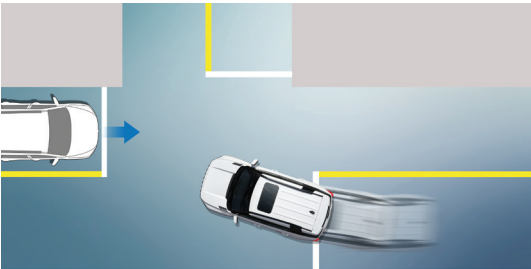
The Torres EVX incorporates Advanced Driver Assistance System (ADAS) safety technology and Intelligent Adaptive Cruise Control. A radar positioned on the front bumper and four Blind Spot Detection radars on each corner monitor every angle of the area surrounding the car and help actively control it and prevent the risk of an accident at crossroads, with oncoming vehicles, as well as vehicles approaching from the rear and side when overtaking.

## 4-CORNER BSD PROTECTION



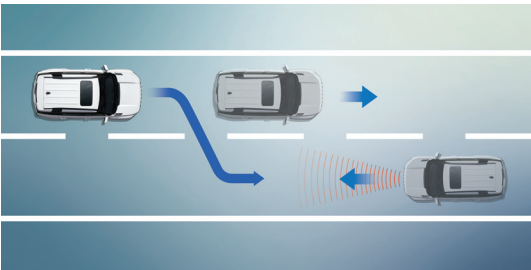
## AEB - Junction Crossing

When driving straight ahead at a junction and with a vehicle approaching from the side, this function will warn the driver and apply emergency braking to avoid or reduce collision impact



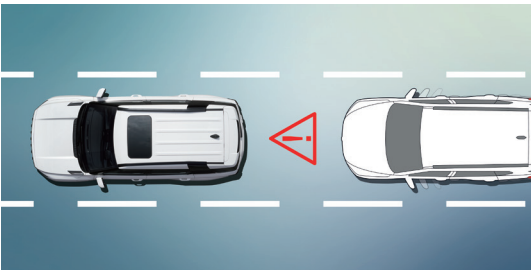
## AEB - Junction Turning

When turning at an intersection and with a vehicle approaching from the opposite direction, this function will warn the driver and apply emergency braking to avoid or reduce the impact of a collision



## AEB - Head On

While driving in a straight line and a vehicle suddenly approaches from the opposite direction, this will warn the driver and apply emergency brakes



## Rear-end Collision Warning

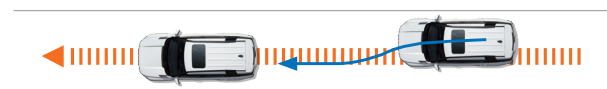
By monitoring vehicles approaching from the rear, this function will warn the driver when an impact is expected from behind





**Intelligent Adaptive Cruise Control (IACC)**  
**Centering Lane Keeping Assist (CLKA)**

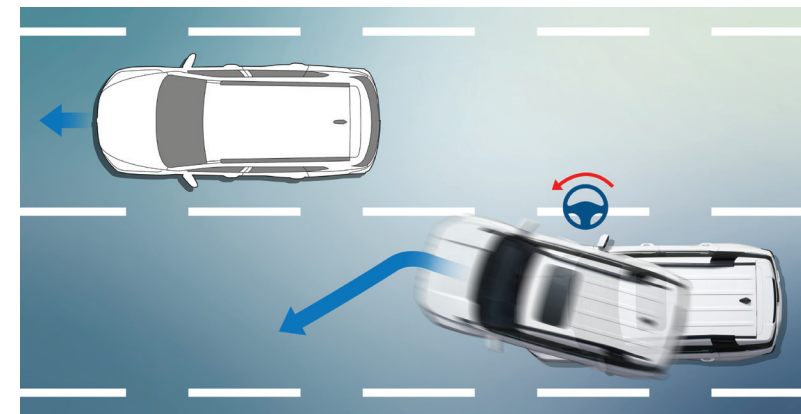
This provides lane centre assist control at any speed when in IACC autonomous driving mode. CLKA improves driver convenience by helping the vehicle to stay in the centre of its lane whether driving at high or low speed by monitoring the lane lines through the front camera and adjusting the steering.



\* When using IACC, drivers are advised to keep their hands on the steering wheel and keep looking forward for safety.

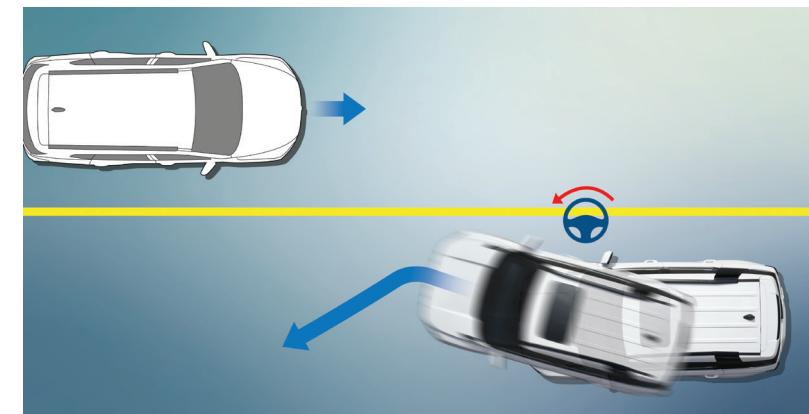
## SAFETY YOU CAN TRUST

Designed to meet 'self-driving level 2.5', the Torres EVX is packed with electronic safety equipment to give the highest level of reassurance, including Emergency Lane Keeping to automatically help steer.



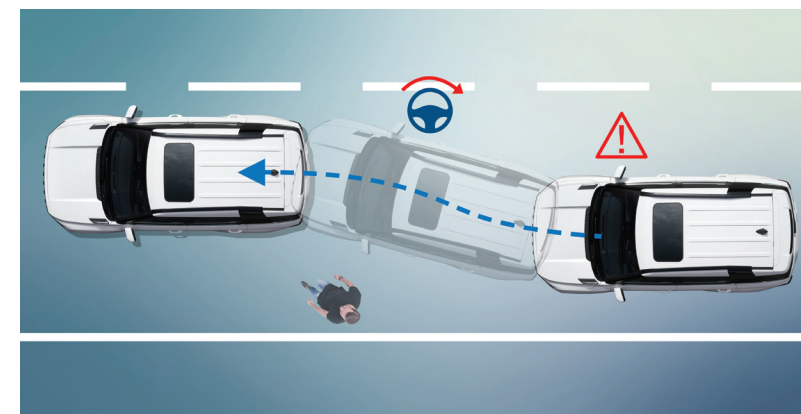
### **Emergency Lane Keeping - overtaking traffic**

Assists steering when a risk is detected from an adjacent vehicle while overtaking



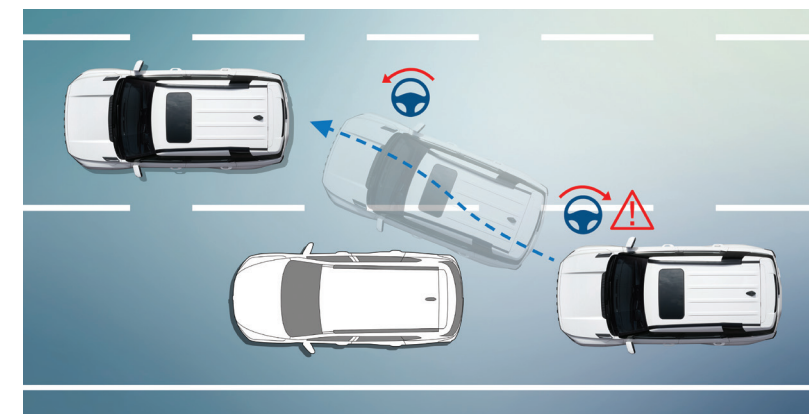
### **Emergency Lane Keeping - overtaking traffic**

Assists steering when a risk is detected during overtaking from an oncoming vehicle



### **Emergency Lane Keeping - Autonomous Emergency Steering**

Automatically manoeuvres the steering wheel to avoid an obstacle in the lane ahead



### **Emergency Lane Keeping - Emergency Steering Assist**

Assists steering the vehicle towards the driver's intended direction to avoid an obstacle ahead



FEATURES

BE PREPARED FOR ANYTHING — AND DO IT IN STYLE



Forward facing HD camera



Rear view HD camera



Black roof rails



Powered safety sunroof



Shark-fin antenna



Automatic welcome illumination



Rain sensing windscreen wipers



Sports rear spoiler with high mounted LED stop light



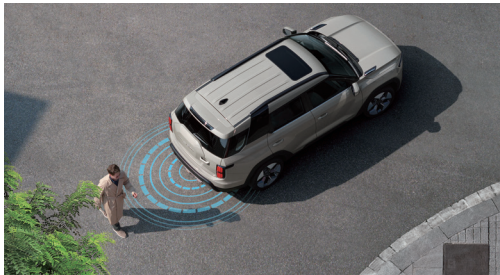
Tyre pressure monitoring system



Virtual Engine Sound System (VESS)



Trailer tow hitch mounting cover



Acoustic vehicle alert system (AVAS) when reversing

MAKE YOUR DRIVING SMARTER, EASIER AND MORE COMFORTABLE.



Regenerative control paddle shifters



Wireless charger



Electronic parking brake



Heated & leather-covered steering wheel



Front cup holders



Rear cup holders



Centre under tray



Door map pockets



USB charger and USB slot in the rear



Rear centre console air vent



Manual roller blind



Electrochromic interior rearview mirror



COLOUR GUIDE

EXTERIOR COLOURS

1-TONE



LATTE GREIGE  
(EBL)

2-TONE



1-TONE



FOREST GREEN  
(GAO)

2-TONE





GRAND WHITE  
(WAA)





DANDY BLUE  
(BAS)  
(1-Tone Only)





IRON METAL  
(ADE)





SPACE BLACK  
(LAK)  
(1-Tone Only)



2-TONE EXTERIOR PACK (BLACK ROOF)  
Black colour treatment on the C-pillar detail,  
styled roof rails and roof mounted air spoiler

Silver C-pillar detail (optional)

INTERIOR COLOURS



TEAL GREY & GREIGE WHITE 2-TONE INTERIOR COLOUR (ADF)



TPU (Thermoplastic polyurethane)



Genuine leather seat



RAWHIDE BROWN INTERIOR COLOUR (OBB)



TPU and cloth combination seat



Genuine leather seat



CHARCOAL BLACK INTERIOR COLOUR (LBH)



TPU (Thermoplastic polyurethane)



Genuine leather seat

WHEELS



18"  
alloy wheels



18"  
diamond-cut finished  
alloy wheels



20"  
diamond-cut finished  
alloy wheels



FEATURES LIST

MECHANICAL AND DRIVE TRAIN	Body-coloured exterior door handles
152.2kW Drive train - Motor, motor control unit and E-gear(reducer)	Black-finished C pillars
73.4kWh lithium iron phosphate (LFP) battery	Silver-finished C pillars (optional)
10.5kW on-board charger	Sporty rear spoiler with high mounted LED stop lamp
2.2kW low voltage DC-DC Converter (LDC)	Trailer hitch mounting
'By Wire' gear changing via toggle control	Black roof rails
Regenerative control paddle shifts	Powered safety sunroof
Heat pump system	Black two-tone exterior package – roof, roof rail, C-pillar and air spoiler (optional)
Speed assist system	
Voltage stabiliser	GLASS
Vehicle to load (V2L)	Tinted and noise-control windscreen glass
In-cable control and protection device (IC-CPD)	Tinted glass on front & rear doors, quarterlights and tailgate
	Solar glass on front doors and privacy glass on rear doors, quarterlights and tailgate
STEERING SYSTEM	INTERIOR
Electric power steering system	Charcoal black interior colour
Driving modes - Comfort/Sport/Eco/Winter	Teal grey & greige white 2-tone interior colour
Electric steering column lock	Rawhide brown interior colour
Manual tilt and telescopic steering wheel	Manual day and night interior rearview mirror
Leather-covered steering wheel	Electrochromic interior rearview mirror (deluxe)
Heated & leather-covered steering wheel (deluxe)	Silver finished interior door handles
	Sun visors with extension & illuminated vanity mirror
SUSPENSION	Luggage board with deluxe centre tray
MacPherson strut front suspension with coil springs	Front door upper finish – TPU covering
Multi-link rear suspension with coil springs	Front and rear doors centre finish – TPU covering
	Plastic front and rear door scuff
BRAKE SYSTEM	Stainless front door scuff and plastic rear door scuff (deluxe)
Ventilated front disc brakes and rear disc brakes	Cup holders in the front and rear
Electronic parking brake with auto-hold function	Luggage cover
	Floor mats
Electronic stability control (ESC) with antilock brake system (ABS), traction control system (TCS), active roll-over protection (ARP), brake assist system (BAS), hill start assist (HSA), emergency stop signal (ESS), hill descent control (HDC), trailer stability assist (TSA) and multi collision brake system (MCB)	Hang-on type accelerator pedal
	Manual roller blind
WHEELS AND TYRES	SEATS
18" alloy wheels with 225/60R tyres	Manually height-adjustable driver's seat and manually adjustable passenger's seat
18" alloy wheels with 225/60R tyres (diamond-cut finish)	8-way power adjustable driver and front passenger seats
20" alloy wheels with 245/45R tyres (diamond-cut finish)	Front seats with 2-way powered lumbar support
Tyre repair kit	Front sliding headrests with hanger
Tyre pressure monitoring system	Passenger's seat walk-in-device
	Front seat back map pockets with mobile phone holder
EXTERIOR	40:60 split foldable rear seat with 32.5 degree tilt and centre armrest
Body-coloured radiator grille	Woven cloth upholstery
Active aero shutters	
Exterior rear view mirrors, electrically controlled, foldable and heated with side repeaters	

Thermoplastic polyurethane (TPU) upholstery
Genuine leather upholstery
Ventilated front seats
Heated seats, front and rear
CLIMATE CONTROL
Front dual temperature zone auto air conditioning system
Automatic defogging system
Heater and air compressor
Air conditioner filter
After-blow mode
Conditioning (Cabin comfort) mode
Rear centre console air vent
CONVENIENCE
12.3" full colour LCD cluster including trip computer
Full LED front head lights with leveling
LED daytime running lights
LED front direction indicators
Rear combination lamp with LED brake lights
Mood lighting on instrument panel and front door trims
Automatic headlight control
Rain sensing windscreen wipers
Front safety powered windows
LED interior light
Dual smart key system with auto locking system
Anti-theft alarm
Twin horn
Intermittent rear wiper and washer
Front parking aid system with 4 sensors with 2-stage alarm
Rear parking aid system with 4 sensors and acoustic vehicle alerting system
Immobiliser
3D 360° degree around view monitoring system
Wireless charger
Smart power-operated tailgate
LED load area light with internal tailgate opening button
SAFETY
Reinforced monocoque body structure
Door impact beams for optimal protection from side impact
Dual and curtain airbags
Front seat side airbags
Driver's knee airbag
Front seat centre airbag

Airbag on/off switch for front passenger seat
Front seat belt ELR pretensioner and load limiter with anchor pretensioner
2nd row seatbelts with load limiters and pre-tensioners (both sides) & 3-point centre seatbelt
Child seat anchorage for rear seats
Child seat anchorage with centre upper tether for rear seats
Seat belts reminder warning for front and rear all seating positions
Autonomous Emergency Braking (AEB) with Junction Crossing (AEB-JC), Junction Turning (AEB-JT), Head On (AEB-HO), Lane Departure Warning (LDW), Lane Keeping Assist (LKA), Smart High Beam (SHB), Front Vehicle Start Warning (FVSW), Driver Attention Warning (DAW) and Safety Distance Warning (SDW)
Rear Blind Spot-detection (BSD) including Blind Spot-detection Warning (BSW), Lane Change-Collision Warning (LCW), Rear Cross Traffic Warning (RCTW), Blind Spot-Collision Assist (BSA), Rear Cross-Traffic-Collision Assist (RCTA), Safety Exit Warning (SEW) and Rear-end Collision Warning(RCW)
Intelligent Adaptive Cruise Control (IACC) including Centering lane keeping assist (CLKA)
Emergency Lane Keeping (ELK) including Emergency Steering Assist (ESA), Autonomous Emergency Steering (AES) and overtaking traffic
AUDIO & VIDEO
12.3" smart audio system with HD rearview camera
Car connectivity - Apple CarPlay & Google Android Auto
Bluetooth hands free
USB charger and USB slot in the front
USB charger and USB slot in the rear
6 speakers
Shark-fin antenna
Remote control audio switches on steering wheel

\* Some features may be optional or unavailable according to market. Please contact your local dealer for the exact details regarding vehicles sold in your area.

TECHNICAL DATA

ENGINE			Electric motor	
DRIVEN WHEELS			2WD	
TRANSMISSION			1AT	
EXTERIOR DIMENSIONS	Overall length		mm	4,715
	Overall width		mm	1,890
	Overall height		mm	1,715 (1,725 : with roof rack)
	Wheelbase		mm	2,680
	Tread	Front	mm	1,620
		Rear	mm	1,640
	Overhang	Front	mm	930
		Rear	mm	1,105
	Approach angle		degree	18.3
	Departure angle		degree	20.8
WEIGHT	Ramp angle		degree	15.3
	Minimum ground clearance		mm	169
	Minimum turning radius		m	5.42
	Gross vehicle weight		kg	2,410
	Kerb weight		kg	1,915
	Gross trailer weight	Braked	kg	1,500
		Unbraked	kg	500
	Electric Motor		-	Interior permanent magnet synchronous motor
	Max. power	kW		152.2
		ps		206.9
ELECTRIC MOTOR	Max. torque	Nm		339
		kg.m		34.6
	Acceleration 0 -100 km/h	sec		8.11
PERFORMANCE	Max. speed		km/h	175
	Battery		-	Lithium Iron Phosphate (LifePO <sub>4</sub> )
BATTERY	Standard charging time (0 to 100%)		-	Three phase : 30h (IC-CPD, 2kW) 9h (11kW)
	Fast charge time (10% to 80%)		-	300kW : 37min 100kW : 42min
	On-board charger power		kW	10.5
	Capacity		kWh	73.4
	Battery voltage		V	390.4
	Electric energy consumption		Wh/km	135.5 : City 186.5 : Combined
	Electric range		km	462
FUEL CONSUMPTION	Electric range city		km	635

\* The energy use will depend on speed, style of driving, climate and route conditions.  
\* The above technical data can vary slightly by regional certification requirements or sales specifications.  
\* The declared energy consumption was determined according to the Worldwide Harmonized Light Vehicles Test Procedure (WLTP).

DIMENSIONS

